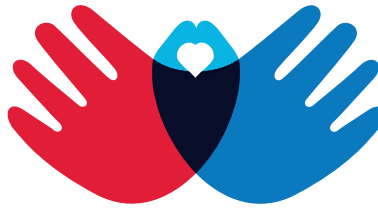


Hy Cite Gives Back Program



Grant Funding

Hy Cite has contributed considerable resources to the HCGB Program, including staff time, finances, and consultancy support.

2022 Donations by Strategic Pillar

Community Engagement

\$441,769



69%

Nutrition

\$117,700



19%

Hispanic Empowerment

\$76,776



12%



DIRECT RELIEF Emergency Medical Response Backpack used in Florida after Hurricane Ian in September 2022. Photo courtesy of Direct Relief

Hy Cite Gives Back Team Involvement

The program has an advisory committee and multiple supporting members across the globe.



CLEAN LAKES ALLIANCE

In October 2022, Hy Cite employees collected seeds at the Lake Farm County Park, which will be used to create and restore prairie spaces around the county leading to reduced shoreline erosion and flooding, increased soil retention and water filtration, and providing incredibly beneficial habitat for our pollinators. Photo courtesy of Clean Lakes Alliance



Saint Vincent de Paul

Nutrition

A \$20,000 grant to the SVdP Food Pantry to provide Dane County community members access to fresh produce, meat, dairy, eggs, bakery, pantry staples, and necessities. The grant was applied to FY23 (Oct '22 to Sep '23), with 85% (\$17,000) being applied to overall food purchasing from Oct '22 to Sep '23, 5% (\$1,000) applied to overall diaper and menstrual products purchasing from Oct '22 to Dec '22, and the remaining 10% (\$2,000) applied to 'emergency pantry operational needs' account for FY23. The grant provided by Hy Cite will allow SVdP to respond immediately to increased market pricing and pantry user demand to serve 52,000 people at or below the 200% federal poverty level, with over 19,000 people being served through the grant.



Clean Lakes Alliance

Community Involvement

The HCGB awarded a \$25,000 donation to help CLA implement projects and build community involvement locally, as well as make more "global" downstream impacts that positively address problems well outside the watershed. In October 2022, Hy Cite employees collected seeds at the Lake Farm County Park, which will be used to create and restore prairie spaces around the county leading to reduced shoreline erosion and flooding, increased soil retention and water filtration, and providing incredibly beneficial habitat for our pollinators. As longstanding partners, we contribute annually to support CLA's efforts, with a total of over \$250,000 granted since 2012, being served through the grant.



Centro Hispano

Hispanic Empowerment

Centro Hispano has provided a range of programs that support Dane County's Latino population including youth, wellness, and pathway programs. Centro is the largest service provider for Latinos in Dane County, WI, and they consistently see approximately 6,000 client visits annually. As longstanding partners, we contribute a minimum of \$15,000 annually to support Centro's programs and services, with a total of nearly \$70,000 granted since 2018.



Direct Relief

Emergency Funding

Hy Cite donated \$10,000 to Direct Relief to support their efforts after Hurricane Ian hit Florida. Our donation provided Direct Relief Emergency Medical Packs for roughly 2,000 people who had disaster-related medical issues, including infection control, trauma care, and personal safety equipment to meet the needs of first responders.



Megan Zielke

ESG Program Coordinator at Hy Cite Enterprises

"I joined Hy Cite Enterprises to pair my background in sustainability and natural resources management with the resources and spirit of the Hy Cite team to create a meaningful difference in the communities where we live, work, and operate. The future of HCGB is bright, and I look forward to working with my team in the next year as we turn this initiative into a lasting foundation."